

Pumpkin Station #1  
Measurement



Pumpkin Circumference: \_\_\_\_\_

Pumpkin Radius: \_\_\_\_\_

Pumpkin Height: \_\_\_\_\_

Stem Height: \_\_\_\_\_

Number of Pumpkin Lines: \_\_\_\_\_

Pumpkin Station #1  
Measurement



Pumpkin Circumference: \_\_\_\_\_

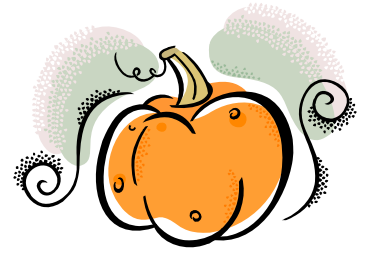
Pumpkin Radius: \_\_\_\_\_

Pumpkin Height: \_\_\_\_\_

Stem Height: \_\_\_\_\_

Number of Pumpkin Lines: \_\_\_\_\_

Pumpkin Station #2  
Pumpkin Poetry



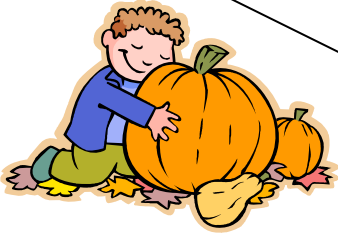
\_\_\_\_\_

\_\_\_\_\_

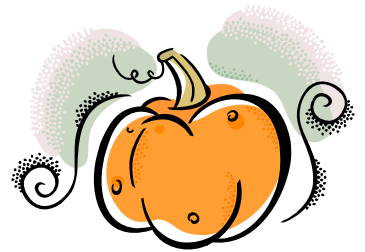
\_\_\_\_\_

\_\_\_\_\_

\_\_\_\_\_



Pumpkin Station #2  
Pumpkin Poetry



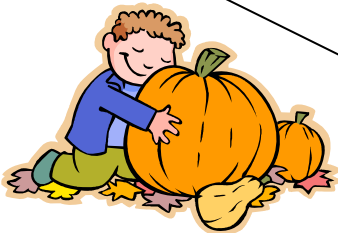
\_\_\_\_\_

\_\_\_\_\_

\_\_\_\_\_

\_\_\_\_\_

\_\_\_\_\_





### Pumpkin Station #3

#### Will It Float?/Guts Estimating

Will your pumpkin float? Yes / No

Did your pumpkin float? Yes / No

How many seeds do you think is in the pumpkin?  
\_\_\_\_\_ seeds

How many seeds were ACTUALLY in the  
pumpkin?  
\_\_\_\_\_ seeds

---



### Pumpkin Station #3

#### Will It Float?/Guts Estimating

Will your pumpkin float? Yes / No

Did your pumpkin float? Yes / No

How many seeds do you think is in the pumpkin?  
\_\_\_\_\_ seeds

How many seeds were ACTUALLY in the  
pumpkin?  
\_\_\_\_\_ seeds



Pumpkin Station #4  
Plotting Your Pumpkin



Pumpkin Station #4  
Plotting Your Pumpkin

Pumpkin Station #5

Weighing In



How much do you think your pumpkin weighs?

\_\_\_\_\_ lbs

How much did your pumpkin weigh?

\_\_\_\_\_ lbs

How did you figure that out?



Pumpkin Station #5

Weighing In



How much do you think your pumpkin weighs?

\_\_\_\_\_ lbs

How much did your pumpkin weigh?

\_\_\_\_\_ lbs

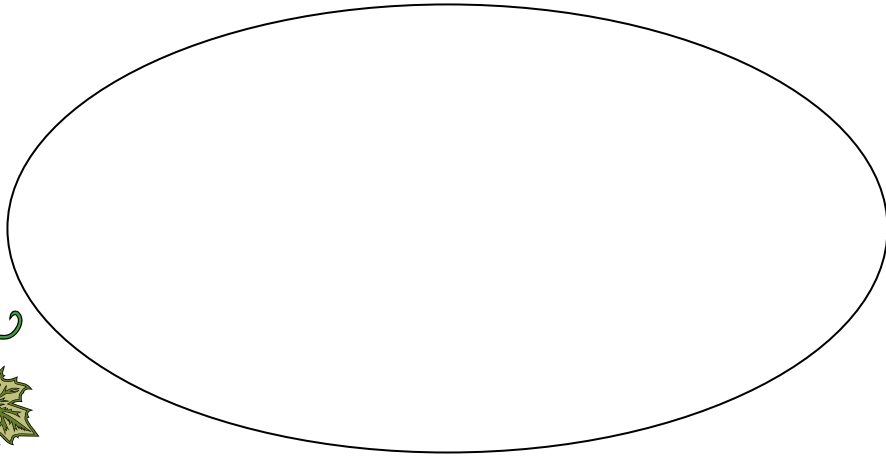
How did you figure that out?



# Pumpkin Station #6 Pumpkin Sketching



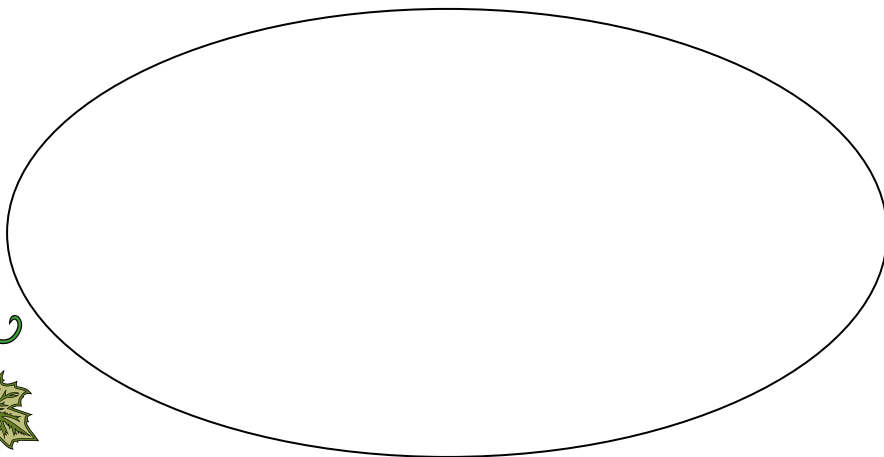
You will soon be painting your pumpkin to look like your favorite book character. Sketch what you think they should look below so you don't 'mess up'-you only get one pumpkin!



# Pumpkin Station #6 Pumpkin Sketching



You will soon be painting your pumpkin to look like your favorite book character. Sketch what you think they should look below so you don't 'mess up'-you only get one pumpkin!





Pumpkin Station #7  
Pumpkin Multiplication

If you have 3 pumpkins, and each pumpkin makes 2 pies, how many pies can you make? \_\_\_\_\_

Your turn! Write your own story problem and give it to a friend to solve. \_\_\_\_\_

\_\_\_\_\_  
\_\_\_\_\_  
\_\_\_\_\_

Answer: \_\_\_\_\_



Pumpkin Station #7  
Pumpkin Multiplication

If you have 3 pumpkins, and each pumpkin makes 2 pies, how many pies can you make? \_\_\_\_\_

Your turn! Write your own story problem and give it to a friend to solve. \_\_\_\_\_

\_\_\_\_\_  
\_\_\_\_\_  
\_\_\_\_\_

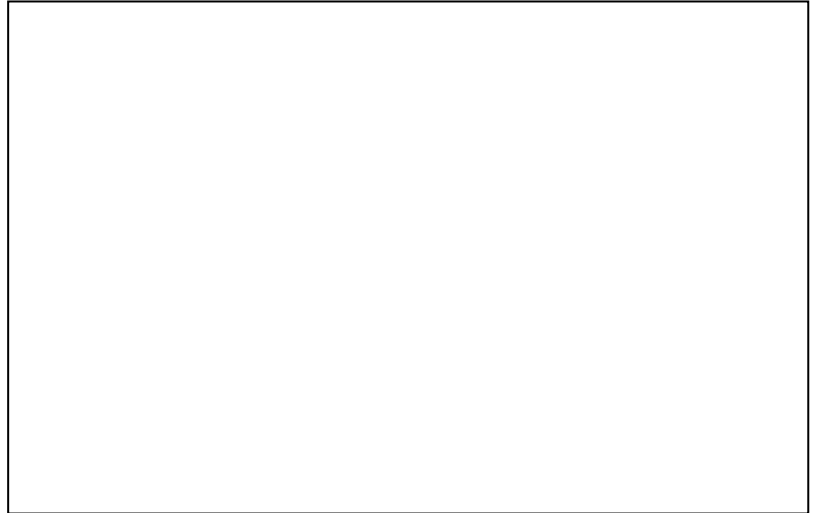
Answer: \_\_\_\_\_

## Pumpkin Station #8

### Pumpkin Graphs

Using the following data, make a graph. Would a pictograph, bar graph or line graph work best?

<u>Name</u>	<u>Pumpkin Weight</u>
Velma	100 lbs.
Fred	30 lbs.
Shaggy	70 lbs.
Scooby	80 lbs.
Daphne	50 lbs.



## Pumpkin Station #8

### Pumpkin Graphs

Using the following data, make a graph. Would a pictograph, bar graph or line graph work best?

<u>Name</u>	<u>Pumpkin Weight</u>
Velma	100 lbs.
Fred	30 lbs.
Shaggy	70 lbs.
Scooby	80 lbs.
Daphne	50 lbs.

